

Hard Facilities Management (FM) Contract 2012-2015

Public-Private Property Partnership Thrives in Tees

Project Type: Facilities
Partners: NHS Property Services Ltd (Tees Locality)
Hartlepool Borough Council
FES FM Ltd

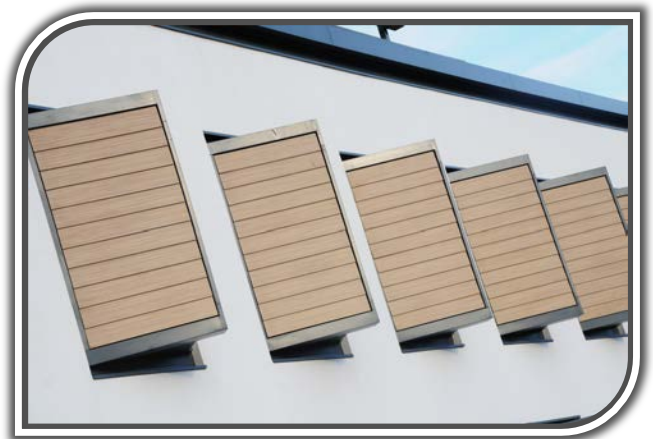
Project description

Provision of Statutory Maintenance Services to NHS Property Services' (NHS PS) premises and buildings.

Community Ventures was appointed to provide Statutory Maintenance Services to premises and buildings that are the responsibility of NHS PS in the Tees locality. Our tender was based on forming a unique tri-party public-private partnership with Hartlepool Borough Council and FES FM Ltd, who have joint responsibility for delivering the Statutory Maintenance obligations.

We have developed and forged a strong partnership with NHS Property Services in the area delivering Statutory Maintenance Services to 25 properties, as well as a management and monitoring service to 45 properties.

Community Ventures' management and monitoring role is to ensure that Landlords are carrying out Statutory Maintenance Services where NHS PS occupies part of a premise under a leasehold arrangement. The scope of the services has been extended to include additional properties, additional statutory maintenance tasks and the provision of a reactive maintenance service.



Ongoing involvement

Due to our excellent performance and high customer satisfaction feedback, the partnership with NHS PS in Tees has been extended beyond the initial period of 15 months to the maximum of 39 months.